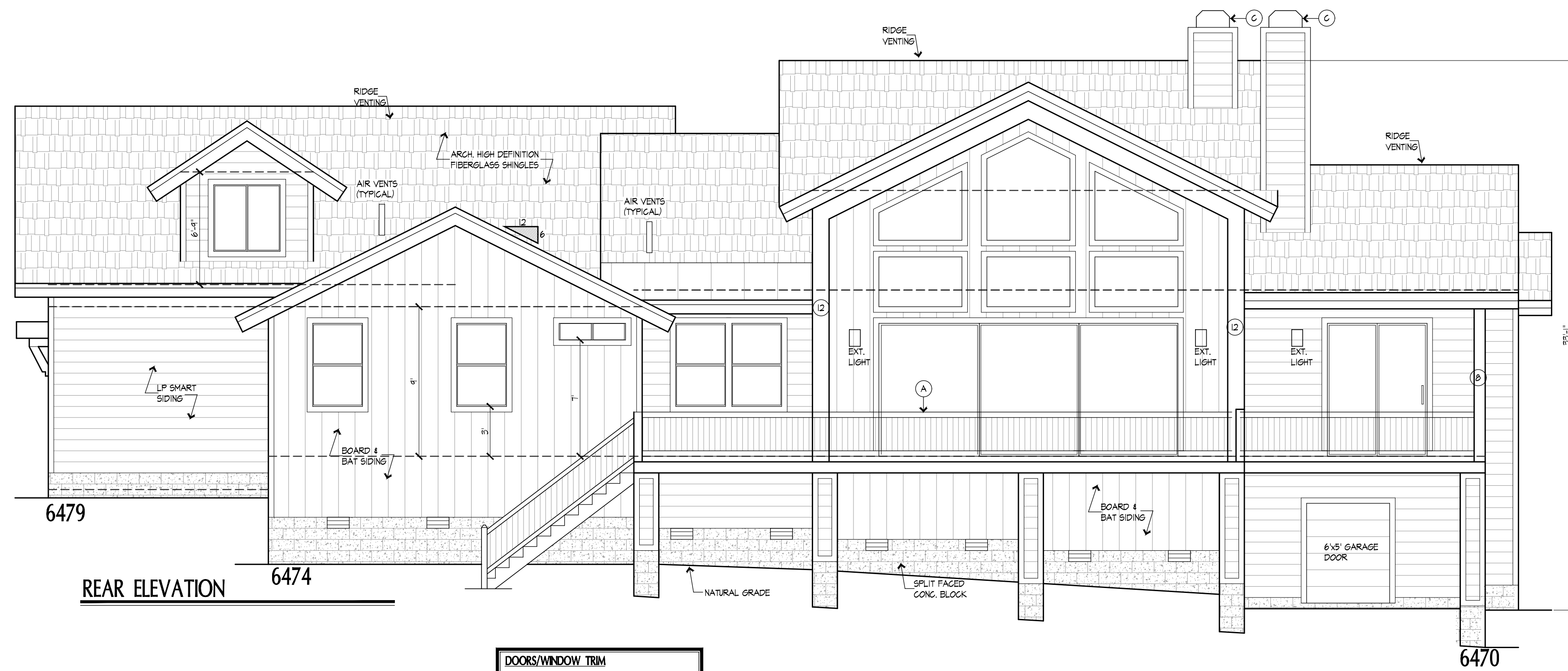
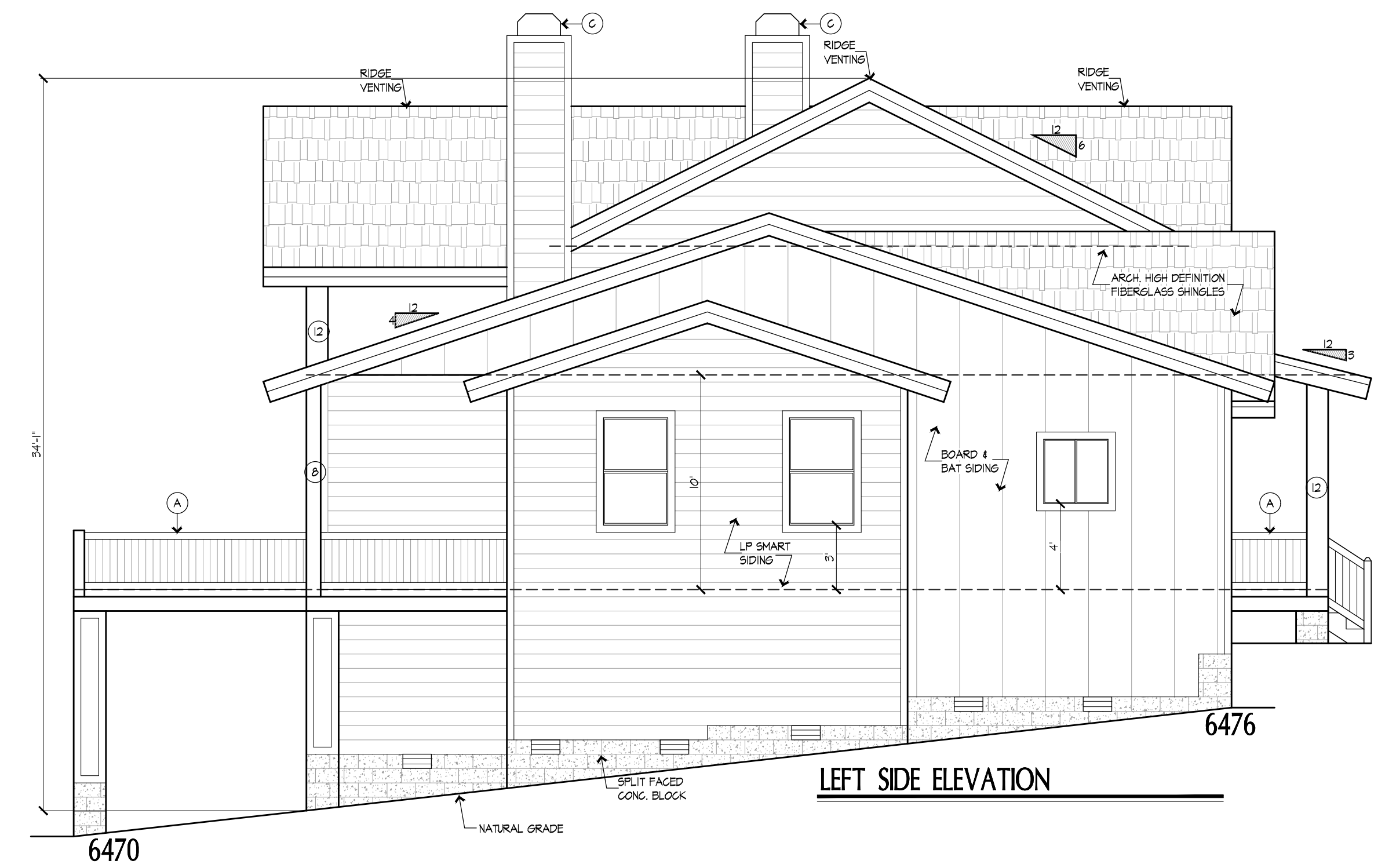


DOORS/WINDOW TRIM
 ALL DOORS AND WINDOW TRIM TO BE 3x6
 HEADER/SILL AND 3x4 SIDES WITH 2" RELIEF. SEE
 'N' DETAIL ON D7 SHEET FOR MORE DETAILS.



DOORS/WINDOW TRIM
 ALL DOORS AND WINDOW TRIM TO BE 3x6
 HEADER/SILL AND 3x4 SIDES WITH 2" RELIEF. SEE
 'N' DETAIL ON D7 SHEET FOR MORE DETAILS.

